

With the radarTOUCH you can turn any display, surface or even open space into a multitouch screen. Any front or rear projection, plasma, LCD or LED wall can become interactive by using the radarTOUCH.

Besides single and dual touch, real multi touch is also possible, allowing multiple users to interact in the same application. Each radarTOUCH creates an interactive area of up to 25 meters width\*. If required, multiple units can be linked to cover even larger spaces for interaction.

radarTOUCH advantages:

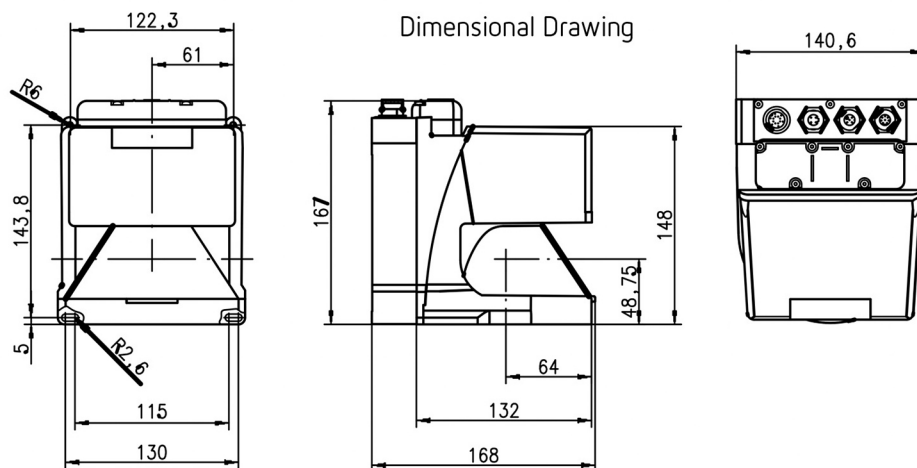
- Reliable tracking for an excellent multi touch workflow
- Immediate software start for automated applications
- Integrated test application for easy configuration of your active image area
- Up to 10 active areas for using different image areas with one radarTOUCH unit
- Separate configuration file for professional customisation
- Simple graphical user interface for easy handling

The radarTOUCH provides standard mouse emulation as well as external interface bindings such as TUIO (2Dcur), Midi, OSC, etc. For other interfaces the radarTOUCH interface is adjustable on demand.

\*metering precision diminishes with increasing distance

Do you want to learn more?

- radarTOUCH
- radarTOUCHplus (with heating)



### Optical Data

Measurement Range	0 ... 25m
Angular Range	max. 190°
Angular Resolution	0,36°
Scanning Rate	25 scans/s or 40ms/scan
Transmitter	infrared laser diode, laser class 1 (EN 60815-1) wavelength = 905nm, Pmax = 15W, pulse duration: 3ns
Average Output Power	12μW

### Detection Fields

Reflectivity	from min. 1.8% (matt black), radarTOUCHplus from 6% (dark grey)
Object Size	> 20mm at distance of 4m > 100mm at distance of 15m
Response Time	at least 40ms (corresponds to 1 scan)

### Electrical Data

Voltage Supply	+24VDC +20% / -30%
Overcurrent Protection	via fuse 2.5A semi-time-lag in the switching cabinet
Current Consumption	approx. 1A (use power supply with 1.5A), approx. 2.5A with heating
Power Consumption	< 75W at 24V including the outputs
Overvoltage Protection	overvoltage protection with protected limit stop

### Mechanical Data

Housing	diecast aluminium, plastic
Weight	2,3kg
Connection Type	4 connectors

### Environmental Data

Ambient Temp. (operation / storage)	0°C ... +50°C / -20°C ... +50°C -20°C ... +50°C / -20°C ... +50°C (radarTOUCHplus)
VDE Safety	class II, all-insulated
Laser Class	1 (acc. to EN 60825-1)
Standards Applied	IEC 60947-5-2

### Warranty

two years

Do you want to learn more?