



Install radarTOUCH hardware

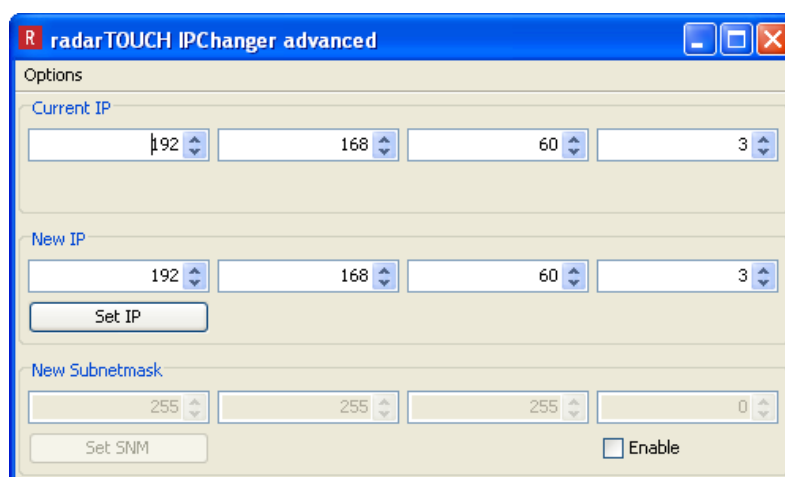
- Connect the measurement device like below:
 - » Mains adapter (with XLR adapter) to Y1
 - » Ethernet cable to Y2 (the RJ45 connector to the network interface of your PC)
 - » For IPChanger advanced reset function connect RS232 cable to Y3



- » If the LEDs above the connectors light up, you can be sure that the device has power supply

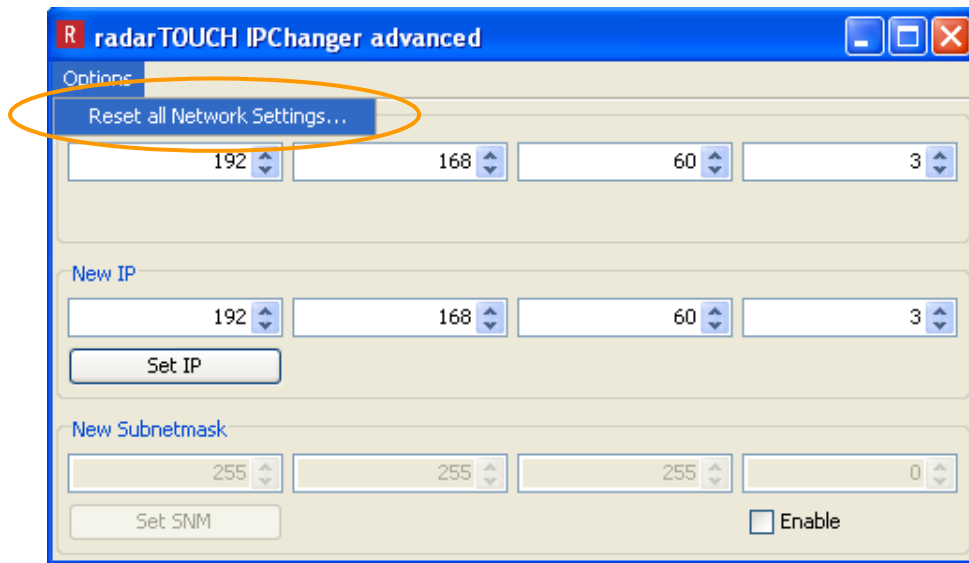
Use IPChanger advanced

- Set the IP address of your PC to a static IP address
(My Network Places – Properties – LAN connection (to radarTOUCH) – Properties – TCP/IPv4 – Properties)
For example: 192.168.60.11 (this is the default OSCclient IP)
(for further information please have a look at the radarTOUCH manual)
- Make sure that your PC network settings are correct regarding the current IP settings from the measurement device. You have to be sure that you can connect to the device
- Plug in the radarTOUCH dongle and open the folder “Tools” and run IPChanger advanced.jar
- Make sure that the rtxSerial.dll is saved in the same folder as the IPChanger.



- If you know the IP of the measurement device (default: 192.168.60.3) you can easily set a new one to integrate radarTOUCH in your network

- If you don't know the IP of the measurement device, you are able to reset the current Network Settings



- You can also change the subnet mask if necessary
NOTE: Changing the Subnetmask should be done only by a specialist! Usually it is not necessary to integrate radarTOUCH in a network.
- For more information please have a look at the radarTOUCH manual or at

www.radar-touch.com